

# FACTSET

---

## IN PERSON AT MCCOMBS

Go to the Financial Center

GSB 3.120

Sit at any terminal

Double Click the FACTSET icon



## IF YOU HAVE SET UP ONLINE ACCESS

If you were set up via a class or program

See next slide for which email to check

And, if you responded to the email

To set up your login

Then you can log in remotely



# FactSet Remote likely email

---

After the McCombs School identifies you as in a qualified program or course, you have been uploaded into the system.

Look for an email and set up your username and password.

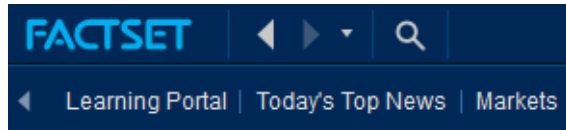
Different students may have different domains

- \_\_\_\_\_@eid.utexas.edu email domain where \_\_\_\_\_ is your UT EID
- Regular @mcombs.edu or @utexas.edu
- Personal non-UT email addresses are not valid

Find email and set up a username and password.

It is recommended you record those so that you do not have trouble accessing the system.

# Markets Tab, Performance Comparison



Asset classes

Return over time

US Multi Asset Class Performance Comparison - 10 Years

	2012	2013	2014	2015	2016	2017	2018	2019	2020	2021	2022	YTD	Grouping
19%	38%	30%	5%	18%	31%	0%	31%	33%	40%	24%	21%	21%	Large Cap MGC-USA
Developed	Small Cap	REITS	Growth	Value	Emerging	Agg Bonds	Value	Growth	REITS	Commodities	Growth	19%	Mid Cap VO-USA
18%	35%	14%	2%	18%	27%	-1%	31%	21%	39%	-5%	19%	19%	Large Cap
Emerging	Mid Cap	Mid Cap	REITS	Small Cap	Growth	TIPS	Growth	Large Cap	Commodities	Value	Large Cap	8%	Small Cap VB-USA
18%	34%	13%	2%	12%	26%	-1%	31%	19%	31%	-12%	8%	8%	Value
REITS	Growth	Value	Large Cap	Emerging	Developed	Growth	Mid Cap	Small Cap	Growth	TIPS	Value	7%	Growth IUSG-USA
18%	32%	13%	0%	12%	23%	-3%	31%	18%	28%	-13%	7%	7%	Developed
Small Cap	Value	Large Cap	Agg Bonds	Large Cap	Large Cap	Large Cap	Large Cap	Mid Cap	Large Cap	Agg Bonds	Developed	4%	Value IUSV-USA
17%	32%	12%	0%	11%	19%	-6%	29%	15%	25%	-15%	4%	4%	Small Cap
Value	Large Cap	Growth	Developed	Mid Cap	Mid Cap	REITS	REITS	Emerging	Value	Developed	Small Cap	4%	Emerging VWO-USA
16%	22%	8%	-1%	10%	16%	-9%	27%	11%	25%	-18%	4%	4%	Mid Cap
Mid Cap	Developed	Small Cap	Mid Cap	Commodities	Small Cap	Value	Small Cap	TIPS	Mid Cap	Emerging	Mid Cap	3%	Developed VEA-USA
16%	2%	6%	-2%	9%	15%	-9%	22%	10%	18%	-18%	3%	3%	Emerging
Large Cap	REITS	Agg Bonds	TIPS	REITS	Value	Small Cap	Developed	Developed	Small Cap	Small Cap	Emerging	1%	Agg Bonds AGG-USA
15%	-2%	3%	-4%	7%	5%	-9%	20%	7%	11%	-19%	1%	1%	Commodities
Growth	Commodities	TIPS	Value	Growth	REITS	Mid Cap	Emerging	Agg Bonds	Developed	Mid Cap	Commodities	-1%	TIPS TIP-USA
7%	-2%	1%	-4%	5%	4%	-14%	16%	2%	6%	-20%	-1%	-1%	REITS VNQ-USA
TIPS	Agg Bonds	Emerging	Small Cap	TIPS	Commodities	Commodities	Commodities	Value	TIPS	Large Cap	Agg Bonds	-1%	Commodities GSG-USA
4%	-5%	-6%	-15%	3%	4%	-14%	9%	-5%	1%	-26%	-1%	-1%	REITS
Agg Bonds	Emerging	Developed	Emerging	Agg Bonds	Agg Bonds	Developed	Agg Bonds	REITS	Emerging	REITS	Agg Bonds	-4%	REITS
-1%	-9%	-34%	-33%	3%	3%	-15%	8%	-24%	-2%	-29%	-4%	-4%	REITS
Commodities	TIPS	Commodities	Commodities	Developed	TIPS	Emerging	TIPS	Commodities	Agg Bonds	Growth	REITS		

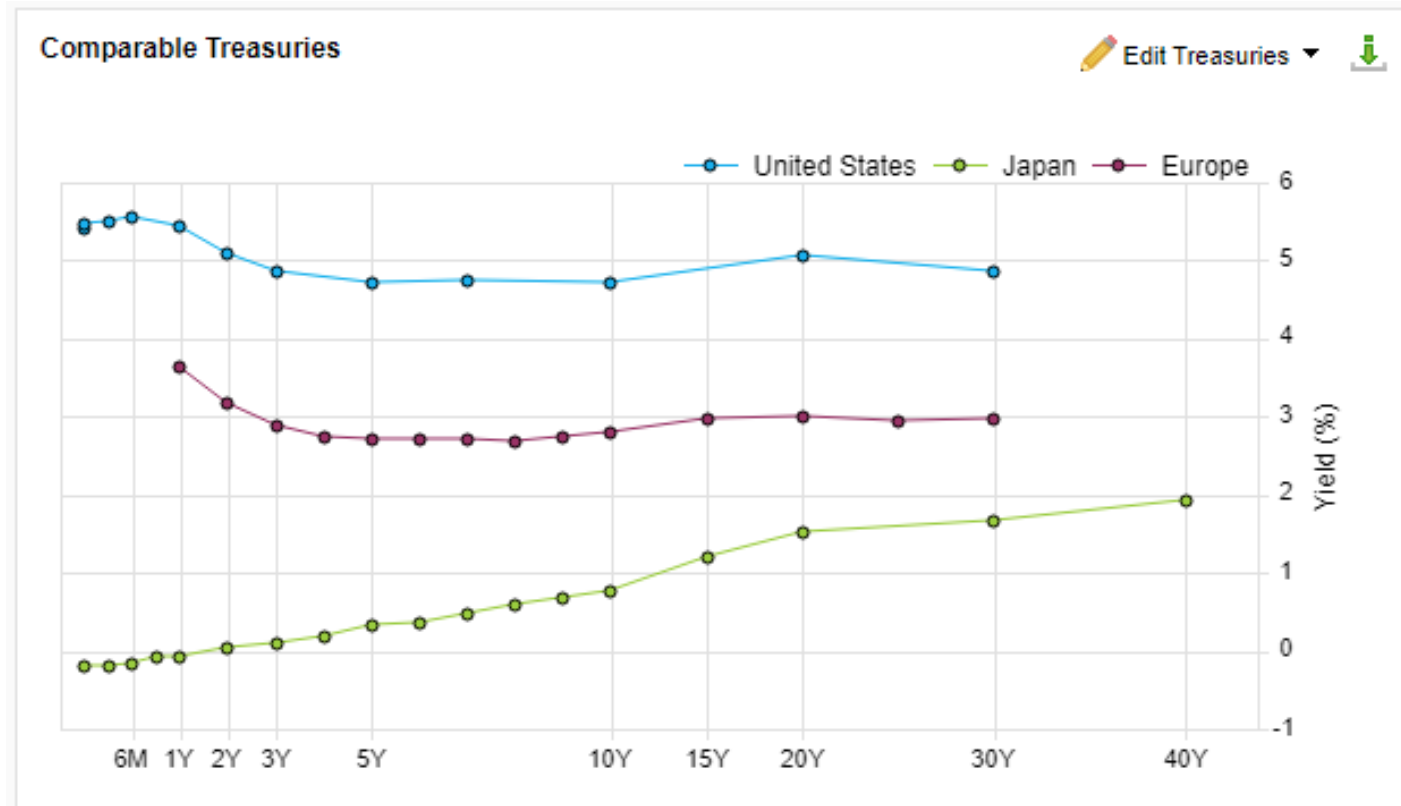
# Stay on Markets Tab

## Fixed Income, Government Yields

Yield curves

Can edit

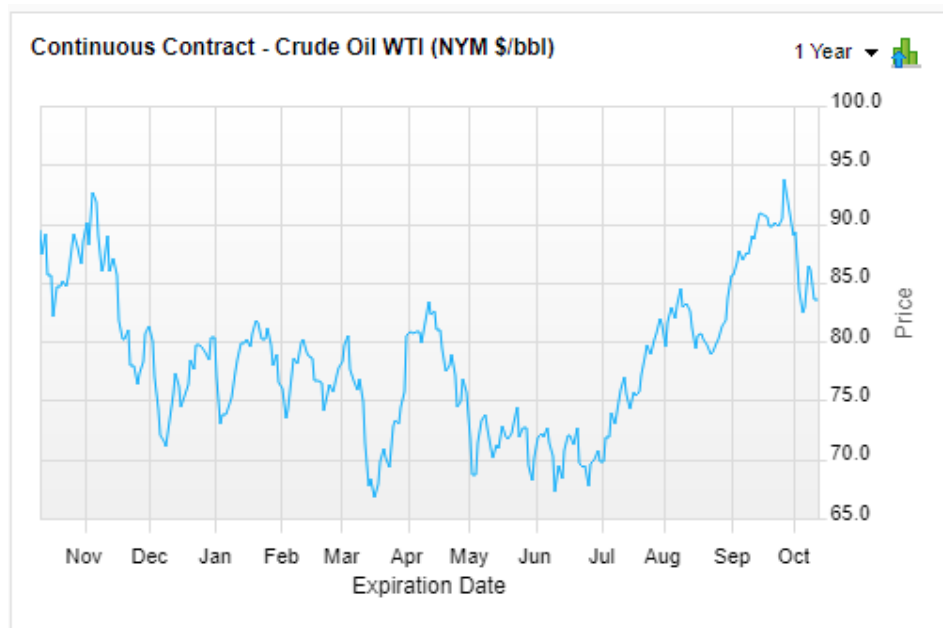
Or add countries



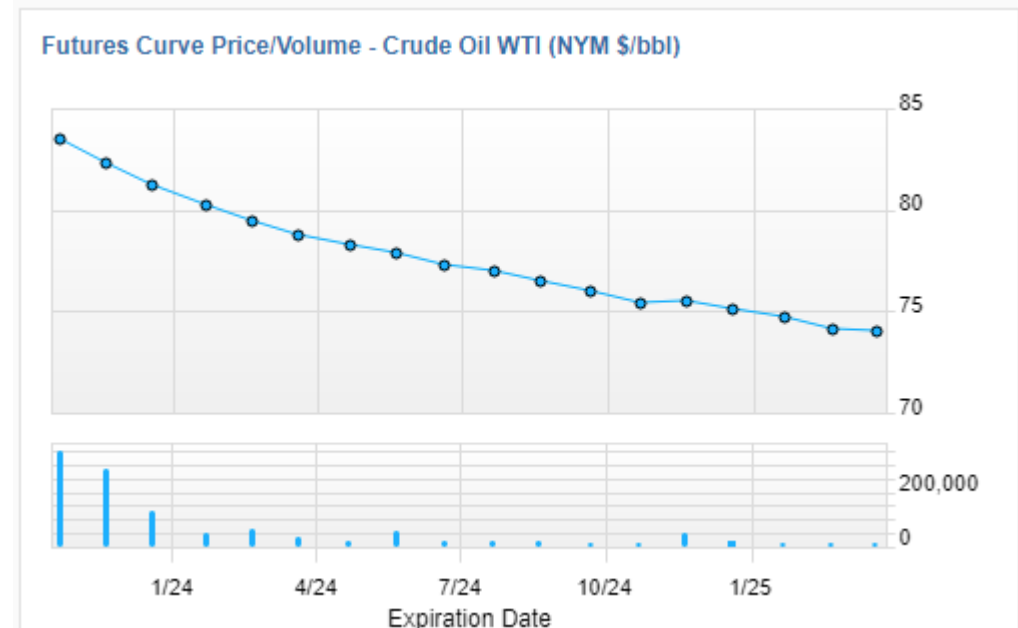
# Stay on Markets Tab

## Commodities Futures, Crude Oil WTI

Continues Futures Price graph, past year



Future curve example



# Change to Company Security Tab; Type stock ticker top left

MSFT top left

Snapshot

Find key statistics

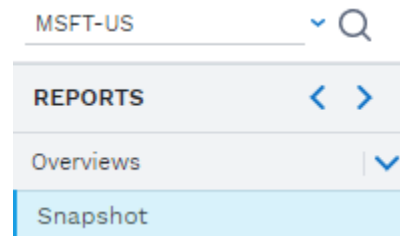
Average rating

Average target price

One estimate of WACC

Different analysts ....

Different WACC estimates



Key Statistics	
<strong>Trading</strong>	
52 Week Range	\$213.43 - 366.78
Avg Daily Vol (3 Mo)	24,237,750.00
<strong>Estimates</strong>	
Dividend Yield	0.92%
Broker Contributors	54
Average Rating	Buy (1.18)
Target Price	396.64
LT Growth Rate	13.36%
Employees	221,000
WACC	9.99%

# Change to Comps Tab, Modify Peers (different analysts different views)

Microsoft Corporation (MSFT) \$ 333.14 Next Rpt Date: 24 Oct '23 Key Statistics Pending Mgt. Change FactSet Fundamentals

## MODIFY PEERS

Comps Set

- Software
- Named Competitors

Region

- All Regions
- Only Target's Country
- North America
- Western Europe
- Pacific Rim

Market cap range (in M \$)

- > 10,000
  - 2,000 - 10,000
  - 250 - 2,000
  - < 250
  - Custom
- 55000 to 2600000

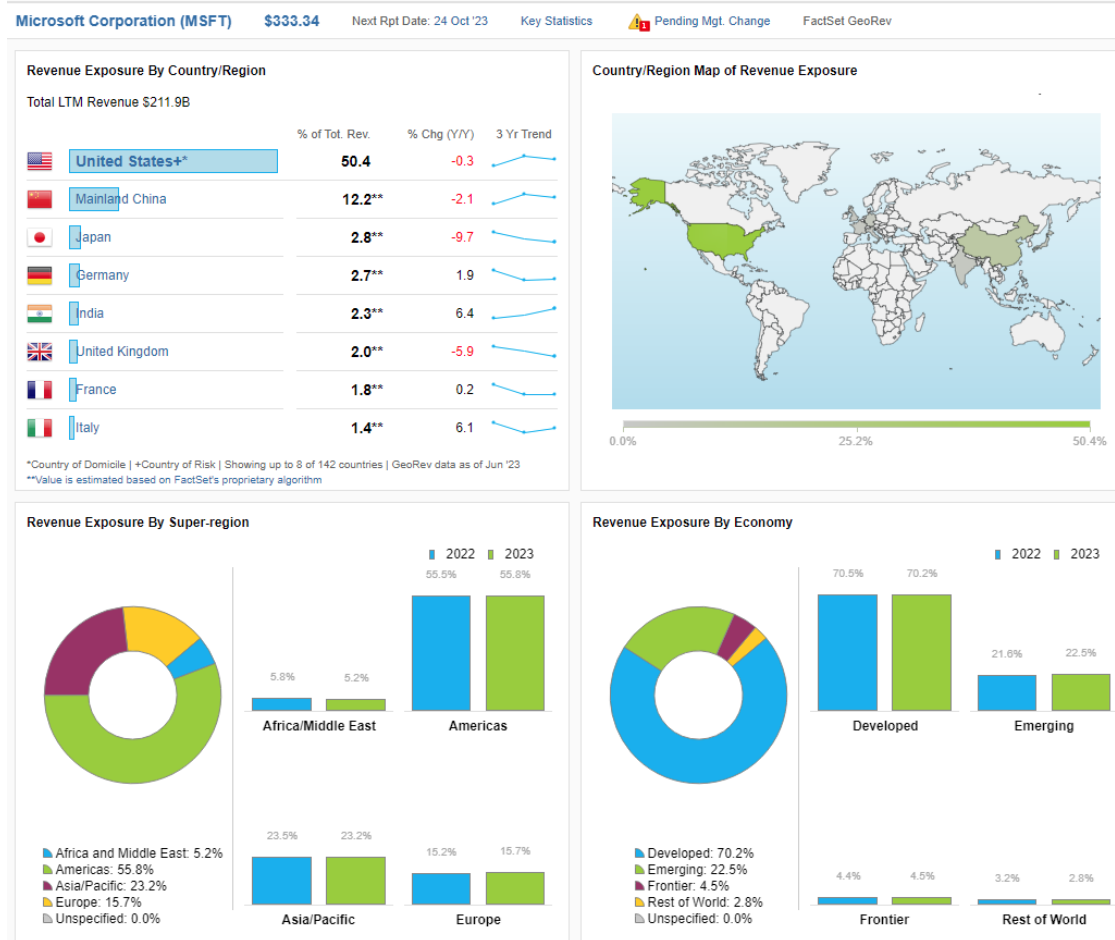
## Comps Tables - Named Competitors

View :  Selected Financials  Valuation  Capitalization  Margins  Performance Custom Add Company Show 8

### Valuation

Company Name	Ticker	Fiscal Period	Price	Market Data (\$)				Valuation (x)		EV/EBITDA (x)		P/E (x)		P/FCF (x)		FCF Yield (%)	Div Yield (%)	Analyst Rating
				Price Target	Enterprise Value	Market Value	Net Debt	Price/Sales	EV/Sales	FY1	FY2	FY1	FY2	FY1	FY2			
Microsoft	MSFT-US	06/2023	327.73	396.88	2,402,39...	2,466,41...	-31,821.0	11.56	11.34	20.48	17.73	29.74	25.81	37.77	32.49	2.34	0.92	Buy (1.18)
Apple	AAPL-US	07/01/20...	178.85	199.93	2,771,95...	2,829,21...	46,798.0	7.35	7.22	22.16	20.89	29.52	27.30	27.12	24.57	4.54	0.54	Overweig...
Alphabet A	GOOGL-US	06/30/20...	137.36	151.58	1,694,95...	1,799,76...	-88,900.0	6.08	5.88	13.88	12.14	24.20	20.44	23.81	18.81	5.17	0.00	Buy (1.21)
Amazon.com	AMZN-US	06/30/20...	129.79	172.82	1,404,76...	1,394,18...	89,409.0	2.52	2.61	14.27	12.47	58.80	40.81	45.61	30.48	-1.97	0.00	Buy (1.10)
IBM	IBM-US	06/30/20...	138.46	147.73	170,821.6	129,604.6	43,975.0	2.10	2.82	11.37	10.89	14.49	13.81	12.21	11.18	7.07	4.80	Hold (1.78)
Oracle	ORCL-US	08/31/20...	108.25	129.17	394,771.8	317,120.8	76,858.0	6.00	7.75	14.83	13.46	19.53	17.33	28.68	24.15	2.89	1.48	Overweig...
Broadcom	AVGO-US	07/30/20...	883.18	983.49	412,118.9	384,832.9	27,286.0	10.64	11.62	17.95	16.62	20.97	19.07	21.42	19.14	8.15	2.08	Overweig...
VMware A	VMW-US	08/04/20...	177.76	161.75	84,685.3	81,141.3	4,606.0	5.67	6.22	16.75	15.42	25.10	22.05	17.08	-	7.42	0.00	Hold (1.96)
<b>Average</b>								<b>6.49</b>	<b>6.93</b>	<b>16.46</b>	<b>14.95</b>	<b>27.79</b>	<b>23.33</b>	<b>26.71</b>	<b>22.97</b>	<b>4.45</b>	<b>1.23</b>	
<b>Median</b>								<b>6.04</b>	<b>6.72</b>	<b>15.79</b>	<b>14.44</b>	<b>24.65</b>	<b>21.24</b>	<b>25.47</b>	<b>24.15</b>	<b>4.85</b>	<b>0.73</b>	

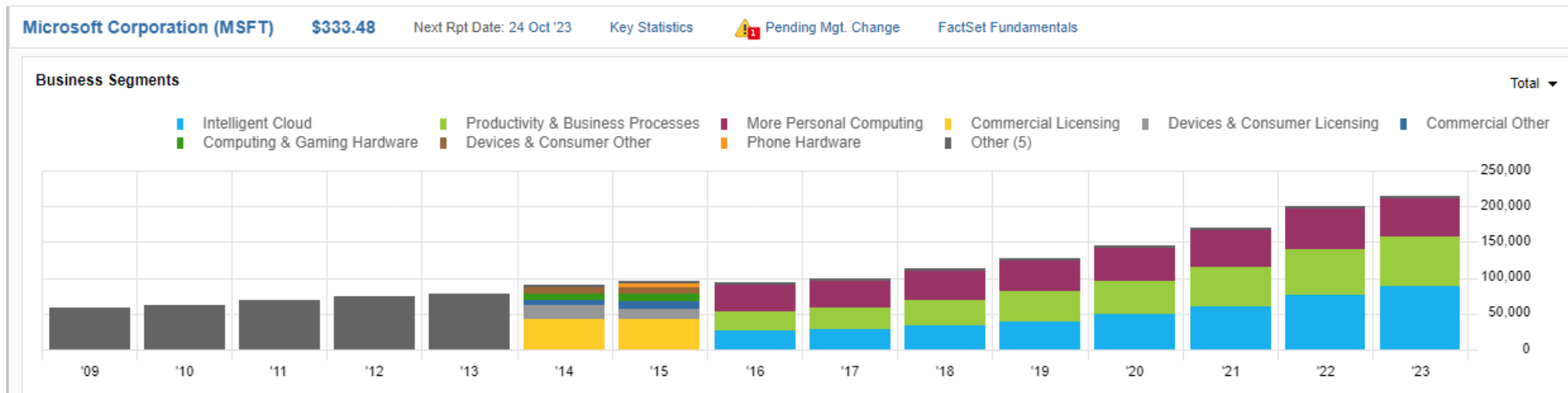
# Change to GeoRev Tab





# Change to Financials Tab to see IS, BS, CF etc. here Segment History

Note changing segments over time, importance of cloud (2016 = 27.2%; 2023 = 41.5%)



# Stay on Financials Ratio Analysis; Click on a row and graph

Or export into excel and make nicer graphs

Scroll down to margin, operating margin, has it generally contracted, increased, or stayed constant?

**Microsoft Corporation (MSFT)**    \$ 333.94    Next Rpt Date: 24 Oct '23    [Key Statistics](#)    Pending Mgt. Change

Standardized    Search for an item

Ratio (%)

	JUN '19	JUN '20	JUN '21	JUN '22	JUN '23
▼ Profitability					
Gross Margin	65.81	67.78	68.93	68.40	68.92
SG&A to Sales	31.85	30.75	27.33	26.35	27.15
Operating Margin	33.96	37.03	41.59	42.06	41.77

# Change to Estimates, Targets and Ratings

If average target price is above actual price, perhaps there are more buys than hold or sell

Number of analysts above graph, have analysts increased or decreased views over time?

